



K10
DIRECT FLOW RO

A NEW GENERATION OF REVERSE OSMOSIS

K10 Direct Flow RO is the latest and most modern reverse osmosis equipment. Its careful design and its versatility are intended to suit to the characteristics of any home.

It combines a high capacity to produce pure water with a minimum amount of rejected water. This means a great water saving and a more sustainable working.





COMPACT

K10 Direct Flow RO is modern, compact and is manufactured according to a careful design that makes possible its perfect integration under the sink of almost any kitchen.



VERSATILE, FUNCTIONAL AND SMART

Unlike other reverse osmosis equipment, filtering cartridges are placed under the K10 and they “disappear” under an elegant cover, which improves its functionality.

It is equipped with a smart display which shows the status of the apparatus, as well as potential issues and the filters’ lifetime.

They can be replaced by simply turning them as shown in the instructions so you can keep enjoying the benefits of pure water by only opening the tap.







PURE WATER FOR THE ENTIRE FAMILY

K10 Direct Flow RO gives you the chance to enjoy a pure, safe and healthy glass of water at home.

Good for your body and your health, osmosis water processed by the K10 is, almost 100%, free of substances such as microorganisms, heavy metals, pesticides, etc. Only what you want remains: truly pure, safe and high quality water.

SUSTAINABLE VALUE

Contrary to other reverse osmosis domestic equipments, K10 Direct Flow has no tank. Pure water will seamlessly flow from your kitchen's tap for you to enjoy it according to your needs.

In this way, any residue is generated and any pollutant plastics are used.

THE PLEASURE OF COOKING

Pure water to wash fruits vegetables.

Just purified water ready to cook and boost the flavors of infusions and coffee and keep ice cubes crystal clear.

Truly pure water to drink with your meals. Explore new dimensions in your kitchen with K10 Direct Flow RO.



COMPACT AND MODERN

K10 Direct Flow RO is designed to be easily installed under the kitchen sink and be hidden by only closing your sink cabinet.



AQUASTOP
AUTOMATIC LEAKING
DETECTION SYSTEM



CAPSULATED
CAPSULATED
CARTRIDGES



LED STATUS
LUMINOUS STATUS
INDICATORS



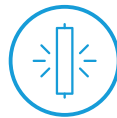
HIGH EFFICIENCY
RECOVERY
IN PRODUCTION



DIRECT FLOW
DIRECT PRODUCTION
OF RO WATER



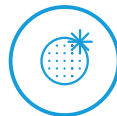
HIGH PERFORMANCE
HIGH PERFORMANCE
ENGINE



FILTER CONTROL
MAINTENANCE
WARNINGS



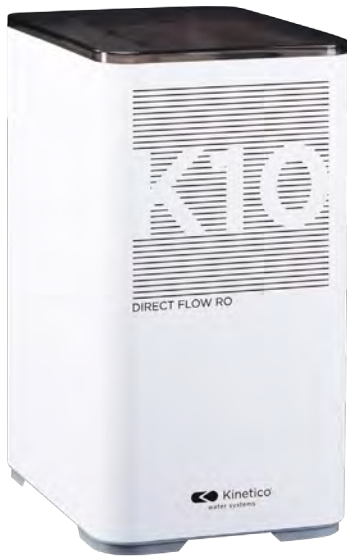
DOUBLE FLOW
GRATER FLOW
OF WATER PROVIDED



AUTO FLUSHING
AUTOMATIC
MEMBRANE CLEANING



SOUND WARNINGS
AUDIO
BEEPS



K10 DIRECT FLOW RO

Thanks to its high pure water flow, K10 Direct Flow RO will allow you to fill glasses and jugs faster with a minimum amount of rejected water. This means great savings and more sustainable working.

TECHNICAL SPECIFICATIONS

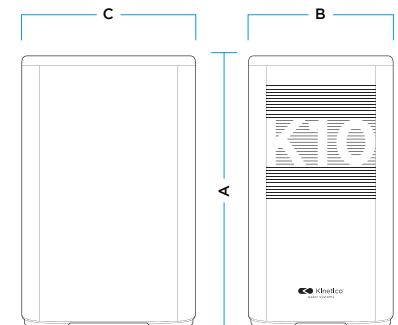
- Purifying technology:
Reverse osmosis
- Prefilter:
5 microns sediments
- Reverse osmosis membrane:
600 GPD
- Flow:
1.58 lpm
- Water efficiency / Recovery rate:
> 50%
- Power consumption:
80 W
- Dimensions (A x B x C in mm):
430 x 231 x 324

INPUT WATER REQUIREMENTS

- Inlet temperature (max. / min.):
38 °C / 5 °C
- Inlet TDS (max.):
1500 ppm
- Inlet pressure (max. / min.):
4 / 1 bar
- Maximum hardness:
150 ppm

COMPONENTS

- 910205 K10 direct flow RO
- 910207 PP sediment cartridge
- 910208 Activated carbon cartridge
- 910209 Activated carbon postfilter cartridge
- 910210 K10 Direct Flow RO Membrane





**Contact your authorized
Kinetico distributor today!**

WTA Ingenieurbüro GmbH
Egelsee 7
78355 Hohenfels

Tel: +49 (0)7557/7499-000
Fax: +49 (0)7557/7499-866
www.wta-water.de